



£149 Per Person Per Week

205 Clarendon Road, LEEDS LS2 9DU

Apartment | 3 Bedrooms | 1 Bathroom

01132442443



www.samarahomes.co.uk



Step Inside

Key Features

- Available for 24/25 Academic Year
- Free Wi-Fi
- Close to University of Leeds

Property Description

Property Ref: 17SP A selection of well presented refurbished flats have become available in this highly sought after purpose built development, directly opposite the University of Leeds.

Main Particulars

Property reference: 17 SP

- Newly refurbished and modern
- Directly opposite the University of Chemical and Process Engineering.
- Surrounded by several shops, restaurants and bars.
- High demand- early viewings are recommended!

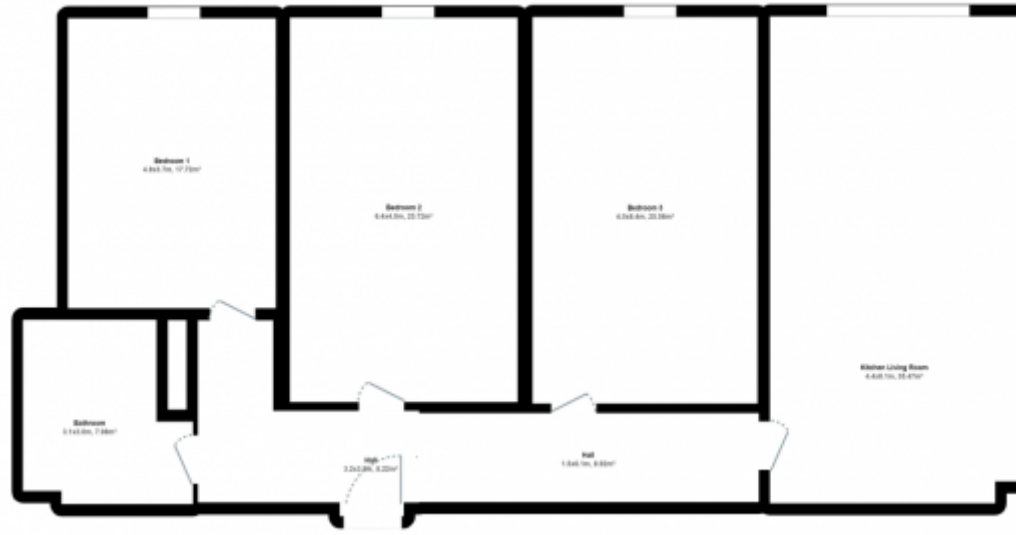
This 3 bedroom property briefly comprises of a kitchen/living area equipped with a washing machine and dining table. There are 3 fully furnished, large double bedrooms each with a double bed, wardrobe, and desk with chair. Finally, there is a premium bathroom, fully tiled with a shower.

The apartment itself is fully carpeted throughout, with central heating and double glazed windows.

This property is priced at £149 per person per week. It is inclusive of gas, water, electricity and complimentary Wi-Fi.

*Please note all photos are a representation of the property, and viewing is required to see the exact layout and size.





This floorplan is for illustrative purposes only and the location of doors, windows and other items are approximate.

Agents notes: All measurements are approximate and for general guidance only and whilst every attempt has been made to ensure accuracy, they must not be relied on. The fixtures, fittings and appliances referred to have not been tested and therefore no guarantee can be given that they are in working order. Internal photographs are reproduced for general information and it must not be inferred that any item shown is included with the property. Copyright © 2024 10078620 Registered Office: , 207 Clarendon Road LS2 9DU

Telephone: 01132442443



www.samarahomes.co.uk